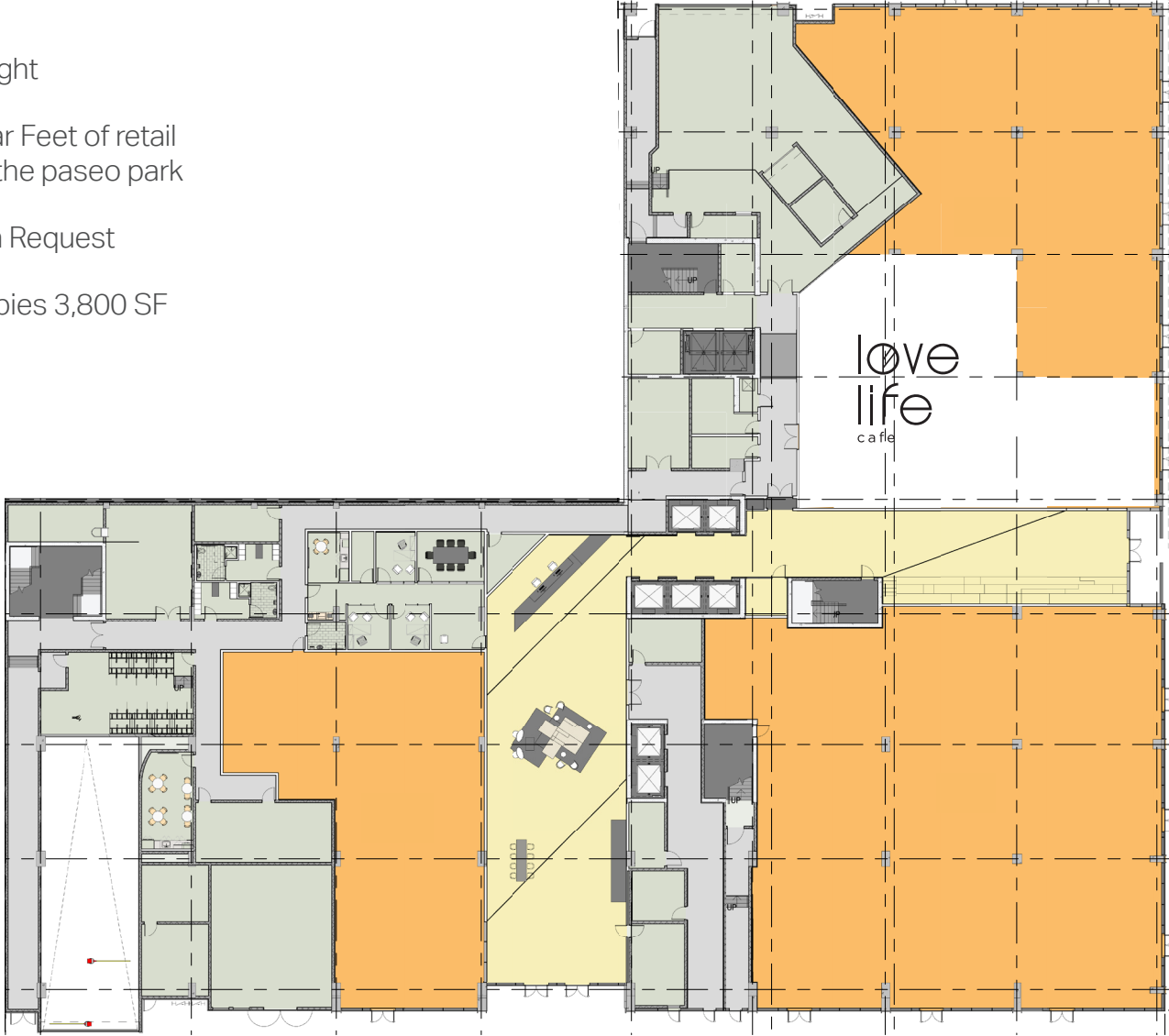


# 545wyn - 1st Floor



- > 22,540 SF Retail available
- > Sub-dividable Sizing
- > Up to 26' Ceiling Height
- > More than 250 Linear Feet of retail storefronts fronting the paseo park
- > Leasing Rates: Upon Request
- > Love Life Cafe occupies 3,800 SF



Paseo Park ►

NW 26th Street