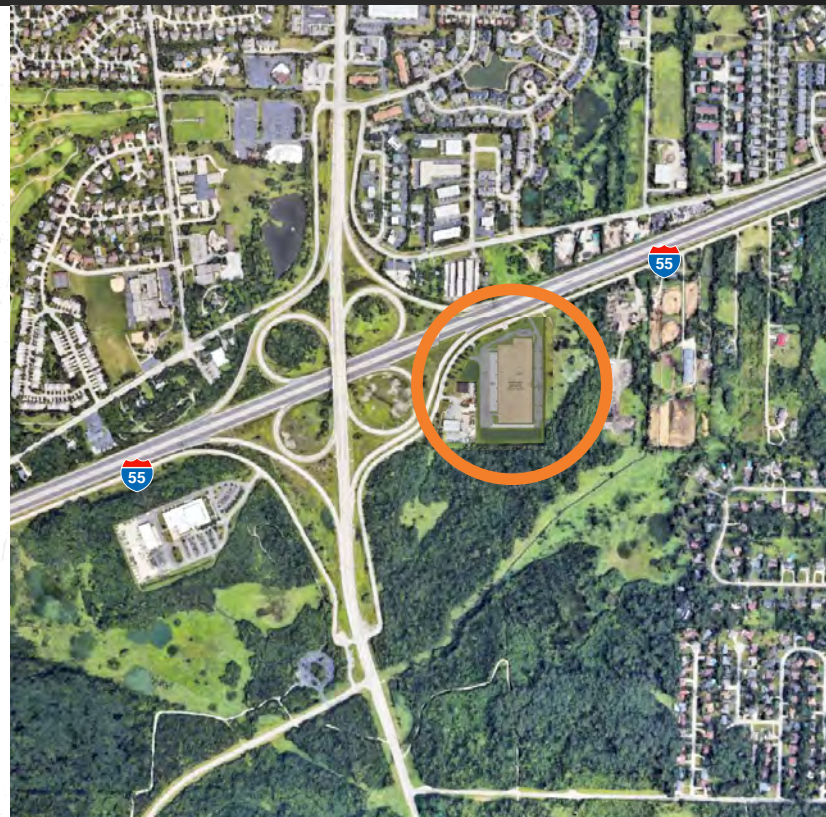




# 1035 SOUTH FRONTAGE RD | DARIEN, IL

## 153,042 SF AVAILABLE, DIVISIBLE

- Adjacent to 4-way interchange on I-55
- Excellent visibility on I-55 with 150,000 VPD
- DuPage County taxes
- Easy access to major expressways and airports
- 4.5 miles to I-355
- 5.5 miles to I-294
- 25 miles to Chicago
- 15 miles to Midway Airport
- 23 miles to O'Hare Airport



CONTACT FOR LEASING INFO

# 1035 South Frontage Rd Darien, Illinois

**Jeff Fischer**  
630.317.0726  
jfischer@hiffman.com

**John Whitehead**  
630.693.0643  
jwhitehead@hiffman.com

## ADDRESS

1035 South Frontage Rd,  
Darien, Illinois

## SIZE

153,042 SF

## OFFICE SPACE

To Suit

## CEILING HEIGHT

30' clear height

## COLUMN SPACING

45' x 50'

## LOADING

31 EXT docks

## DRIVE IN DOORS

2

## POWER

To Suit

## SPRINKLER SYSTEM

ESFR

## CAR PARKING

156 spaces

## LEASE RATE

Subject to offer

## SALE PRICE

Subject to offer

