

Be first to what's next.

2050 N Dominick





An architectural rendering of the 2050 N Dominick building at dusk. The building is a modern skyscraper with a glass facade, showing interior office spaces with people working. The building is illuminated from within, and the sky is dark. In the foreground, there is a landscaped area with a tree, a walkway, and a large abstract sculpture. People are walking on the walkway.

Introducing *2050 N Dominick.*

Very few things are as iconic as the Chicago skyline, and the opportunity to redefine it doesn't come along very often.

Designed by Gensler, 2050 N Dominick will rise 22 stories and take its place as the next office development in Lincoln Yards when completed in 2022. With unprecedented light and air, and incredible views in every direction, 2050 N Dominick establishes a new benchmark for today's businesses.

Learn more about how this instant icon will shape the city for years to come at lincolnyards.com.



Joining the ranks of the city's most iconic office buildings, 2050 N Dominick is a boutique building for today, and the next big thing for the world's most prominent companies.

Overlooking the Chicago River, and close to Lincoln Park and Bucktown, this is the only address for those who want a Class A experience in the heart of the city.

Office with a
new sense of arrival.



More than a *building.*

2050 N Dominick in Lincoln Yards is a new kind of office building looking for a new kind of tenant—one with a bold vision for its company's future.

Delivering in 2022: be the next to inhabit Lincoln Yards and bring your company into the future, today.



Outdoor space

31,000 SF of landscaped roof terraces with panoramic views of the river, Lincoln Yards, and Chicago's iconic skyline. Roof level is available to all 2050 N Dominick tenants as a communal amenity.

Dining

Full-service restaurant on ground floor

Fitness center

Full-service fitness center and a programmed yoga room

Locker rooms

Spa-like locker rooms with showers

Bicycle storage

Storage for up to 200 bikes

Pioneering amenities.

2050 N Dominick aims to offer the ultimate combination of modern work space and meaningful amenities in a burgeoning neighborhood.



2050 N Dominick *at a glance.*

630K

rentable SF

3,700+ SF

ground floor retail

32K SF

floor plates

13'–19'

floor to floor heights

30' x 30'

column spacing

31K SF

outdoor space

22

stories

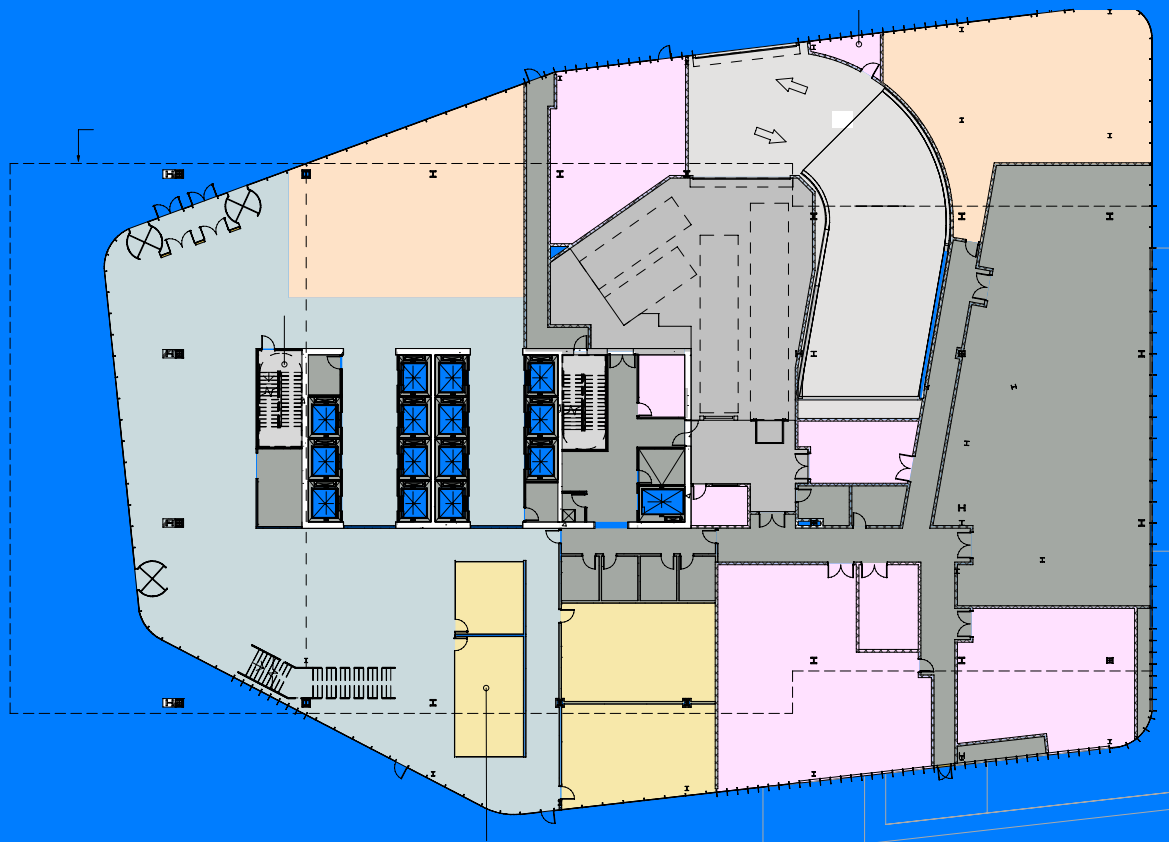
38

balconies

45

parking spaces

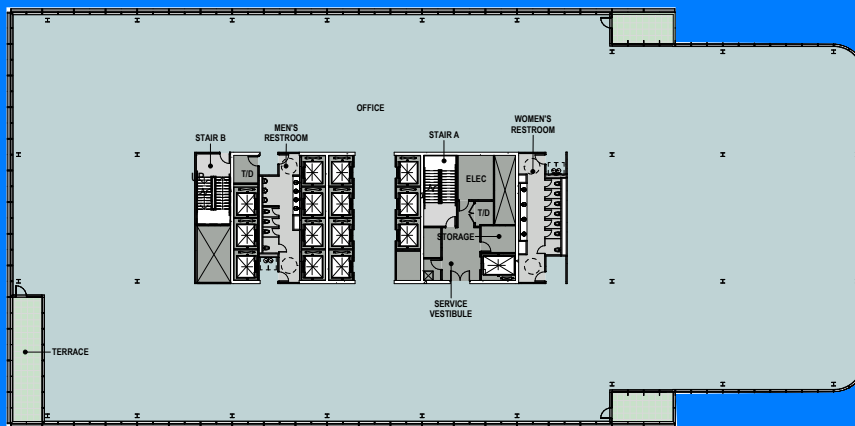
2050 N Dominick *at a glance.*



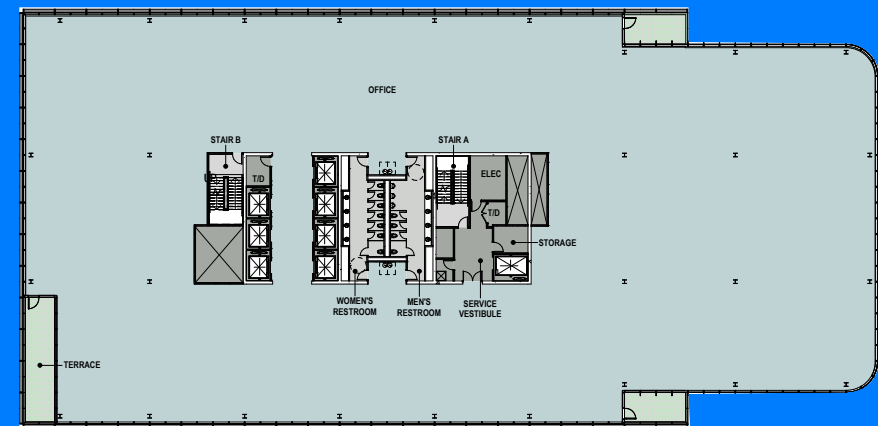
Ground Floor

2050 N Dominick *at a glance.*

2050 N Dominick features work space designed to meet the needs of today's engaged and demanding workforce. Flexible and spacious floor plates, an abundance of natural light, and over 31,000 SF of terrace space make for a productive and happy work life.



Typical Low-Rise



Typical High-Rise



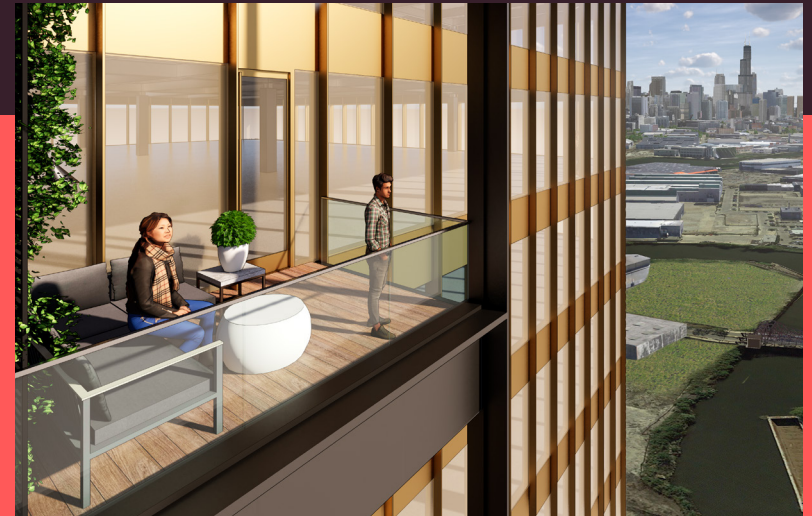


Sunsets over the skyline. Lunch on an extended 606 trail. Pre-work runs along a revitalized river. **2050 N Dominick is just minutes from the charm of Lincoln Park and the vibrant arts and culture scene of Bucktown.**

Here, tenants can enjoy the elegance of Chicago's most refined neighborhood and the dynamism of a creative center filled with energy. Vibrant parks, classic cultural institutions, high-end boutiques, and sought-after restaurants are all right outside your door, allowing for countless opportunities for socialization and inspiration.

This is your new day-to-night playground.

Office outside
the box.







2050
N Dominick



Developing Chicago for more than 30 years.

Part developer, part investor, Sterling Bay projects reflect our vision, imagination, experience, and track record for success.

We build headquarters that transform company cultures and revitalize communities.



convene



SRAM

Uber



WPP



pandora

dyson



Wilson



Russ Cora
312.952.0279
rcora@sterlingbay.com

Dave Gloor
312.446.4139
dgloor@sterlingbay.com

lincolnyards.com