



Space Available office@sterlingbay.com 312.202.3478

1325 W Fulton

Artist's conceptual rendering





Building Exterior
Artist's conceptual rendering

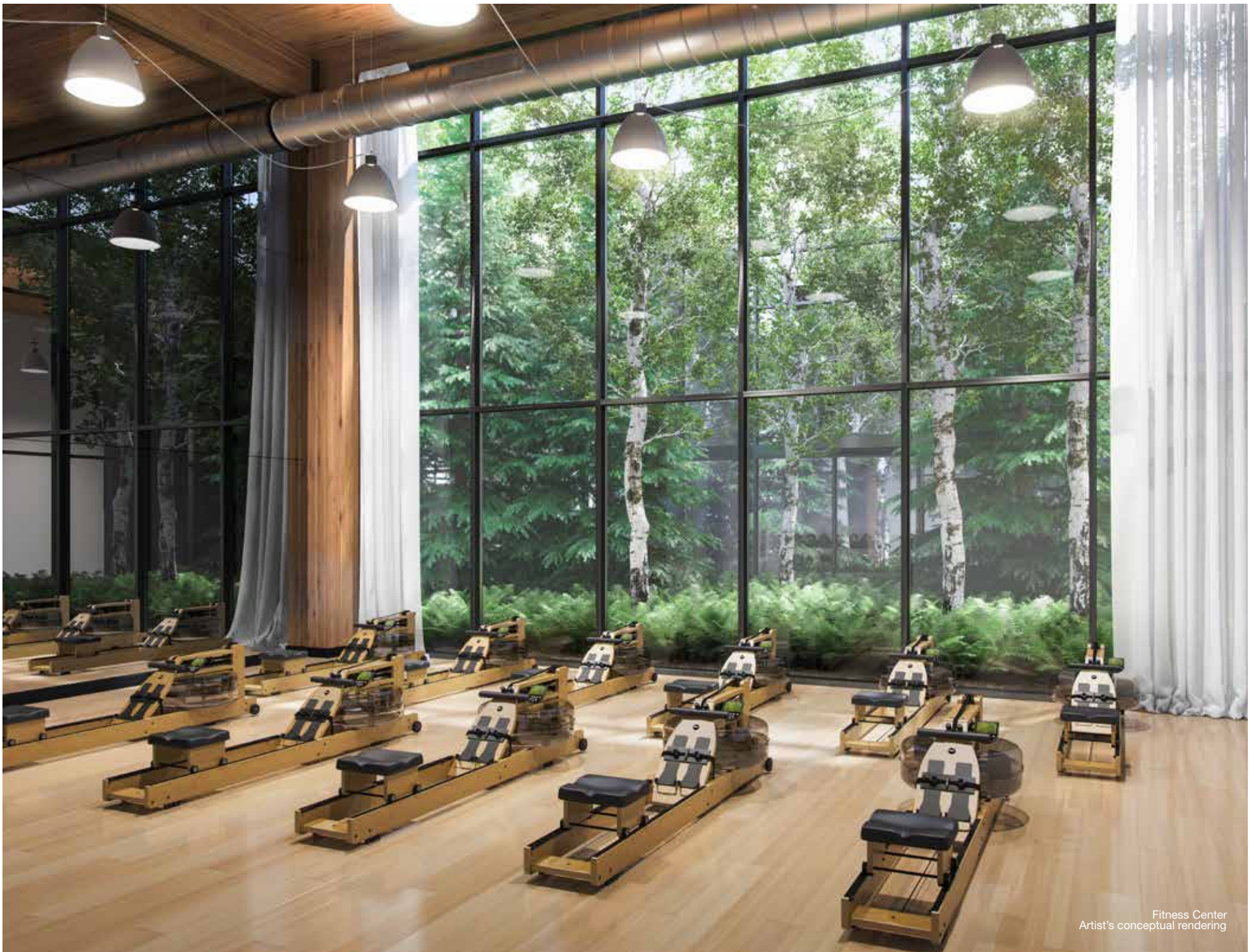
Property Details

Building Features

- > Total Square Footage: TBD
- > Over 13,000 SF outdoor space
- > Stories: TBD
- > Floor plates: 54,881 SF
- > Ceiling height: 12'6"
- > Private lobby entrances available
- > Exceptional views
- > Private balconies on each floor
- > 275 indoor parking spaces
- > Over 23,000 SF of tenant amenities including a fitness center, conference center, tenant lounge, bar, maker's room, library and gaming room surrounding an atrium forest
- > Secure bike room
- > 0.5 miles to 'L' station
- > Shuttle service to commuter trains
- > Existing fiber includes AT&T, Comcast/Xfinity
- > Multiple identity opportunities
- > Pressbox drycleaning



Retail Exterior
Artist's conceptual rendering



Fitness Center
Artist's conceptual rendering



Fulton Street Lobby
Artist's conceptual rendering



Conference Facility
Artist's conceptual rendering



Library
Artist's conceptual rendering



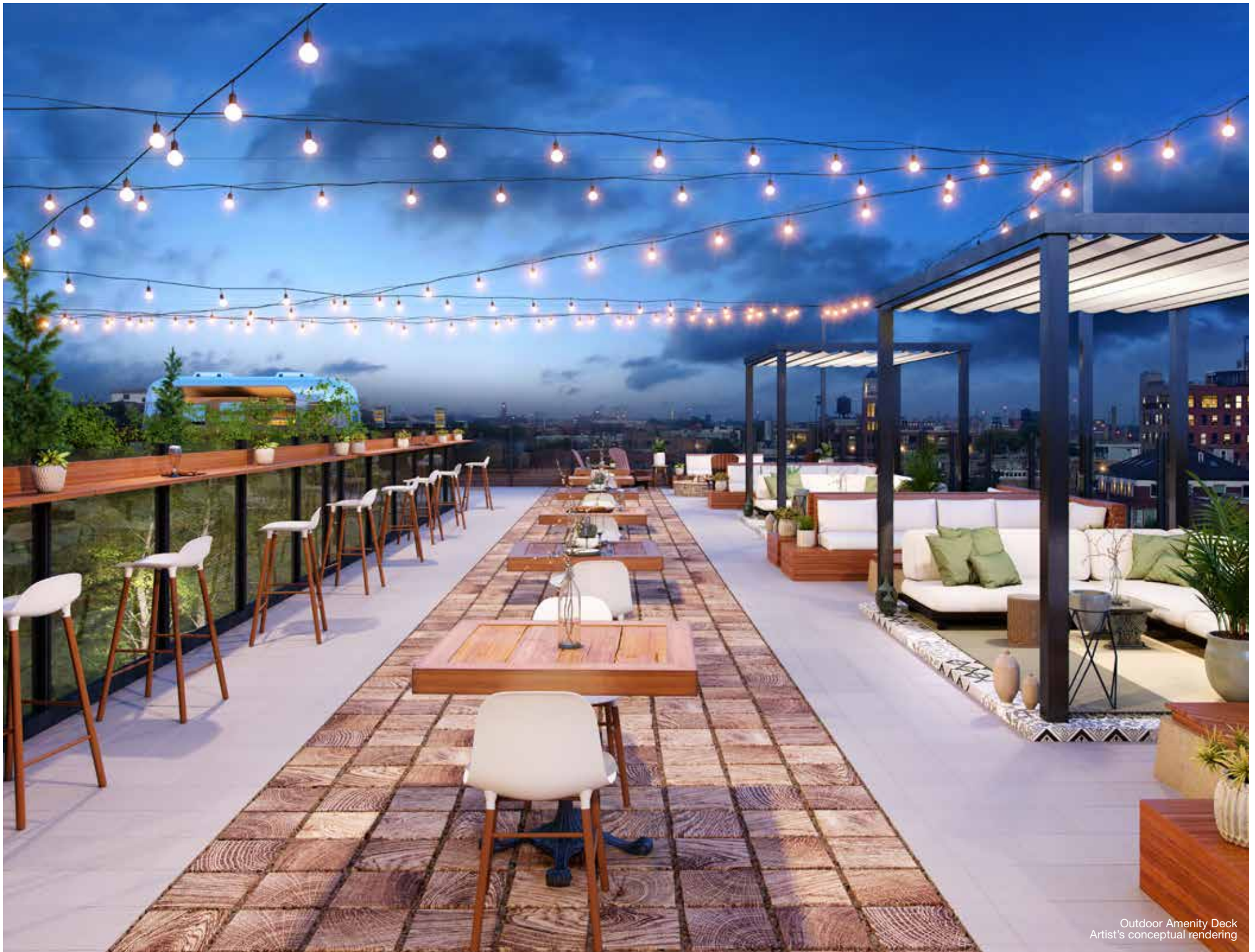
Tenant Lounge
Artist's conceptual rendering



Maker's Room
Artist's conceptual rendering



Outdoor Amenity Deck
Artist's conceptual rendering



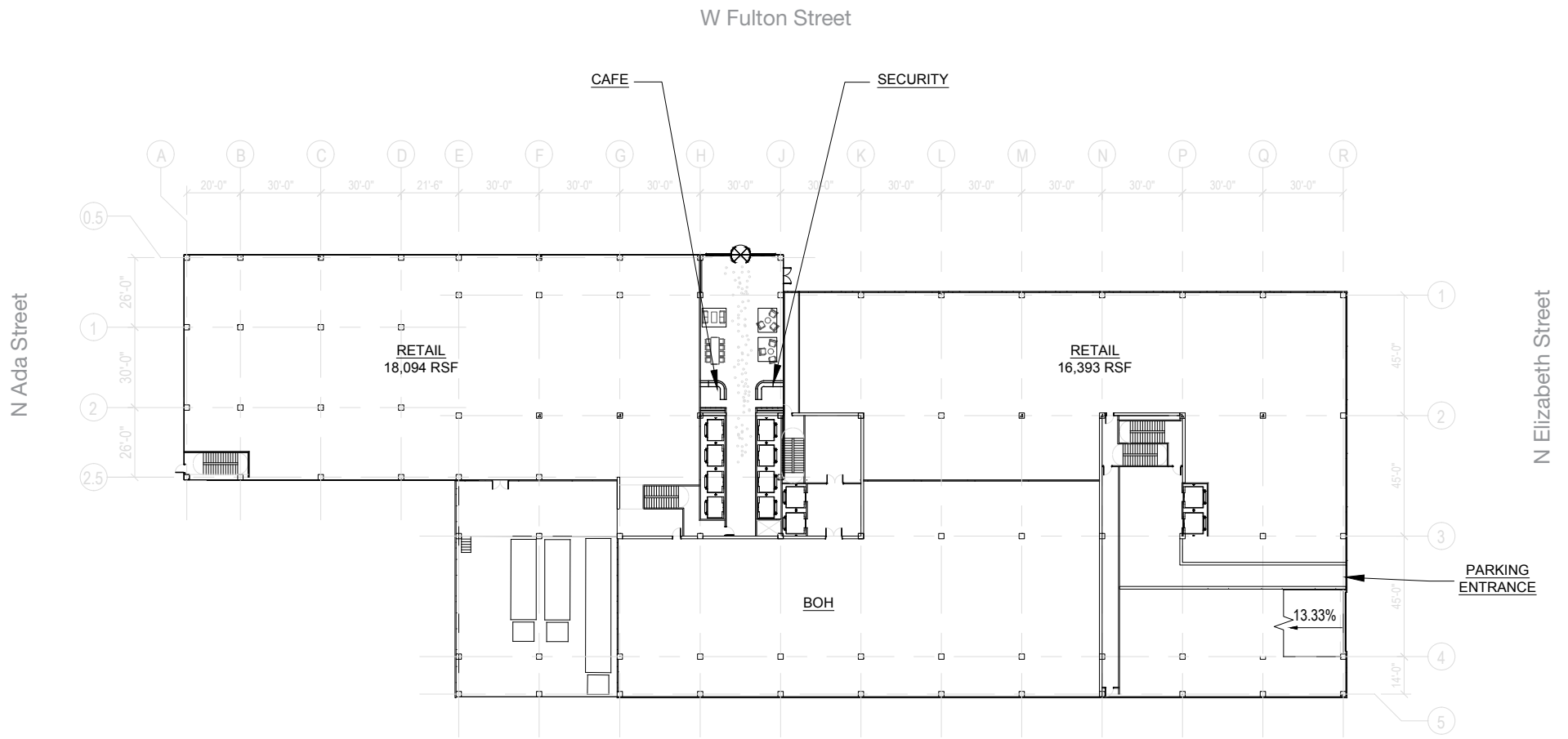
Outdoor Amenity Deck
Artist's conceptual rendering



Floor Plans

Ground Floor Retail

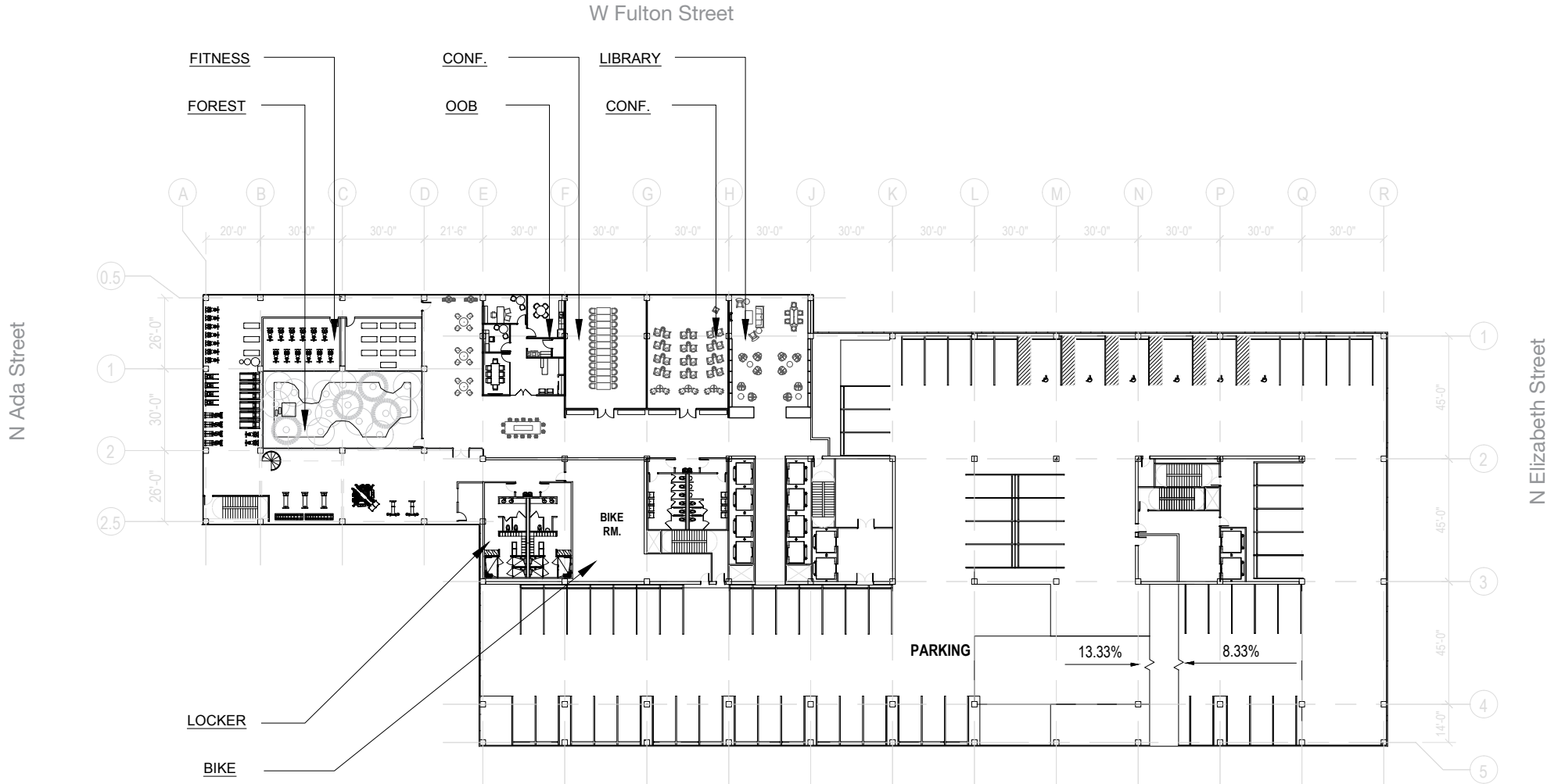
> 34,487 SF





Floor Plans

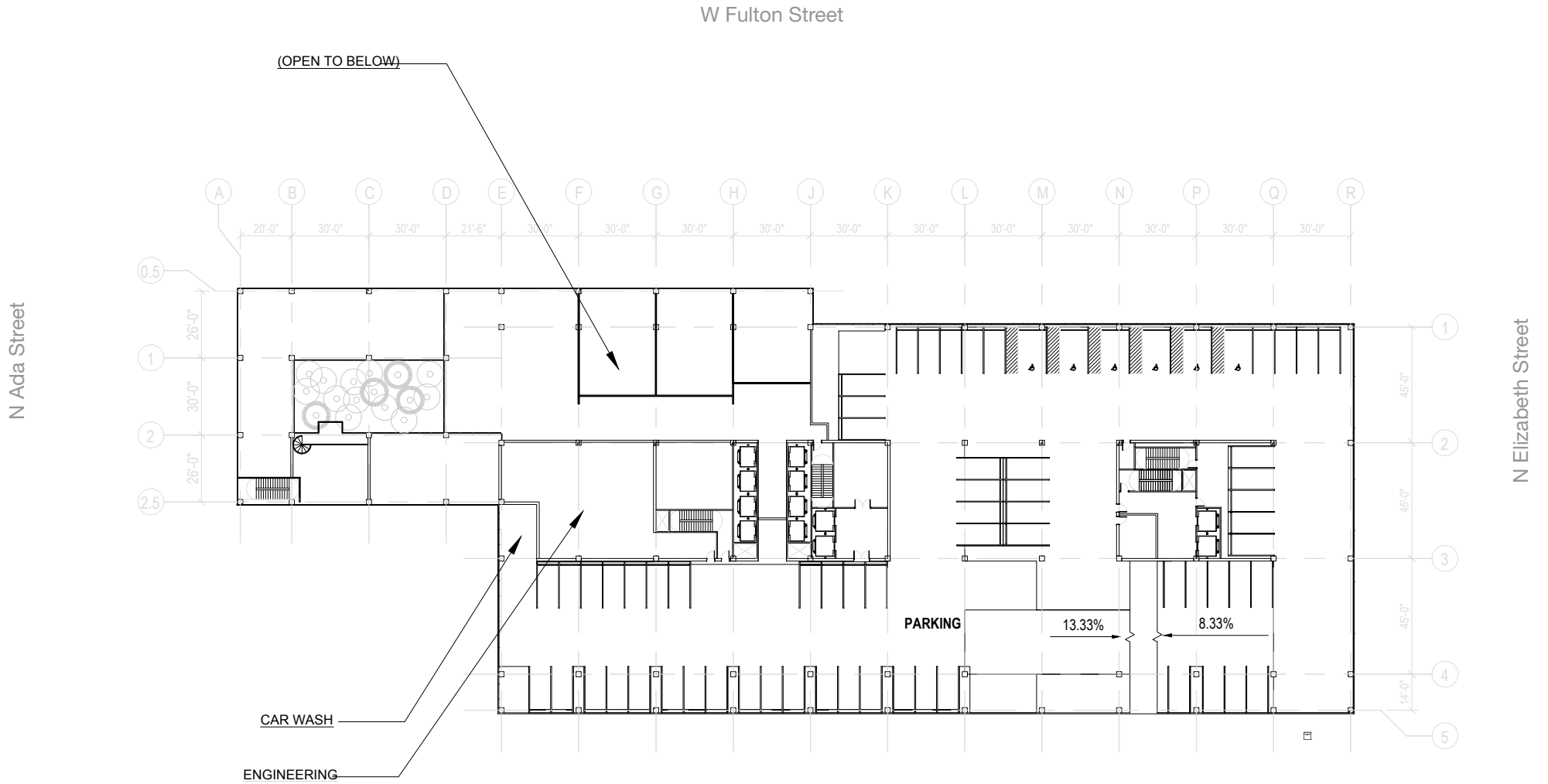
Second Floor, Parking & Amenities





Floor Plans

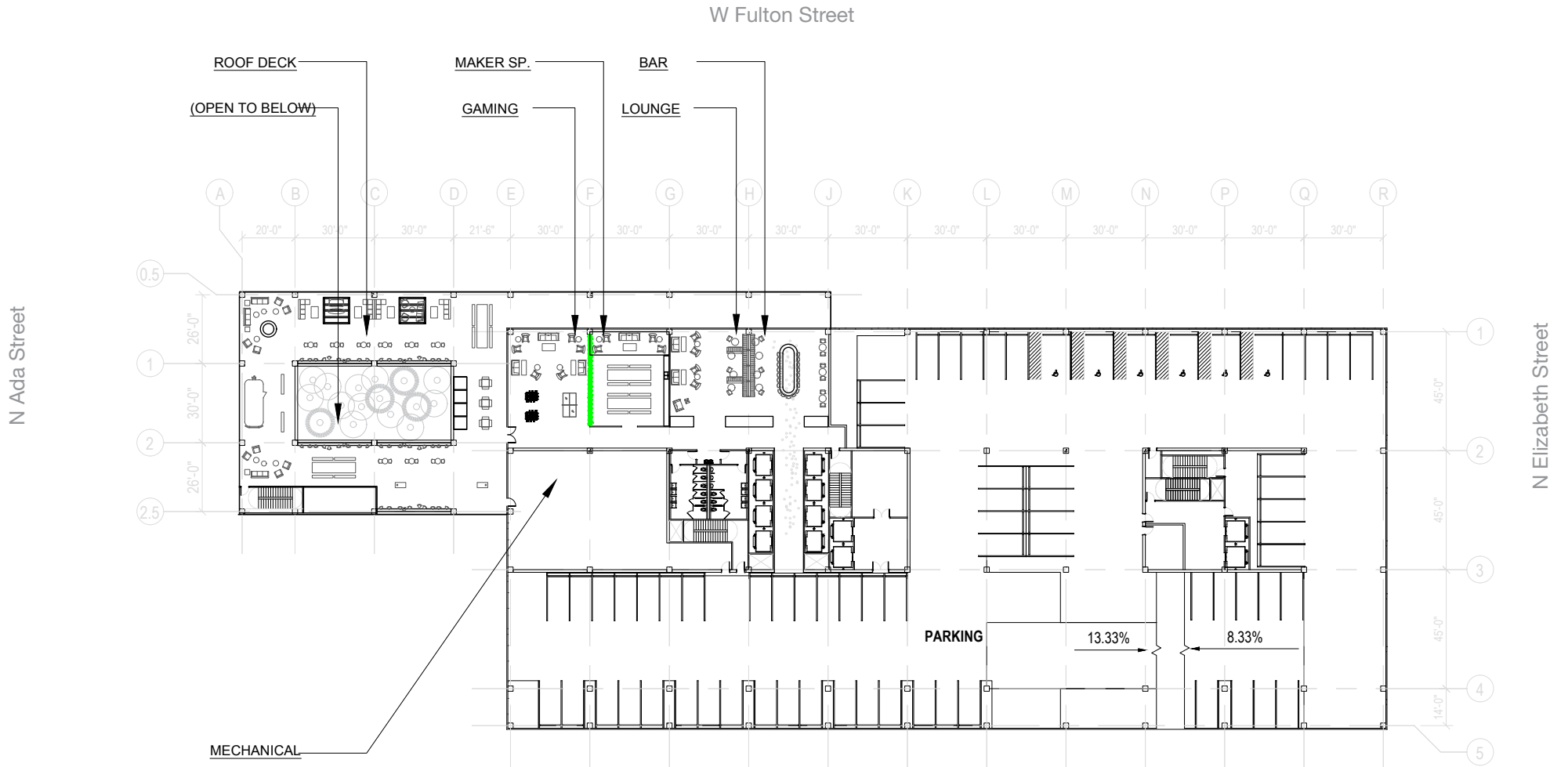
Third Floor, Parking





Floor Plans

Fourth Floor, Parking & Amenities

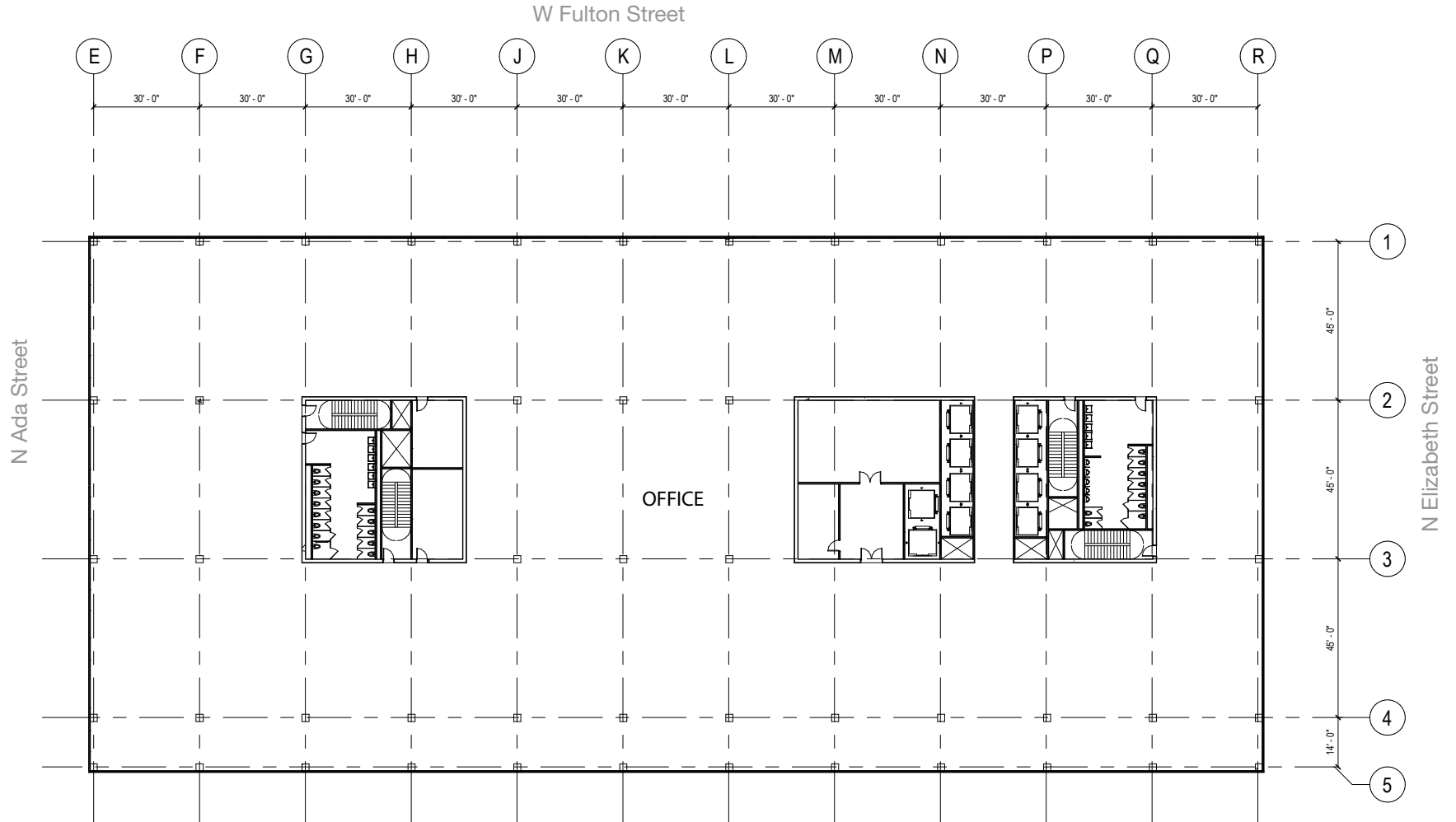




Floor Plans

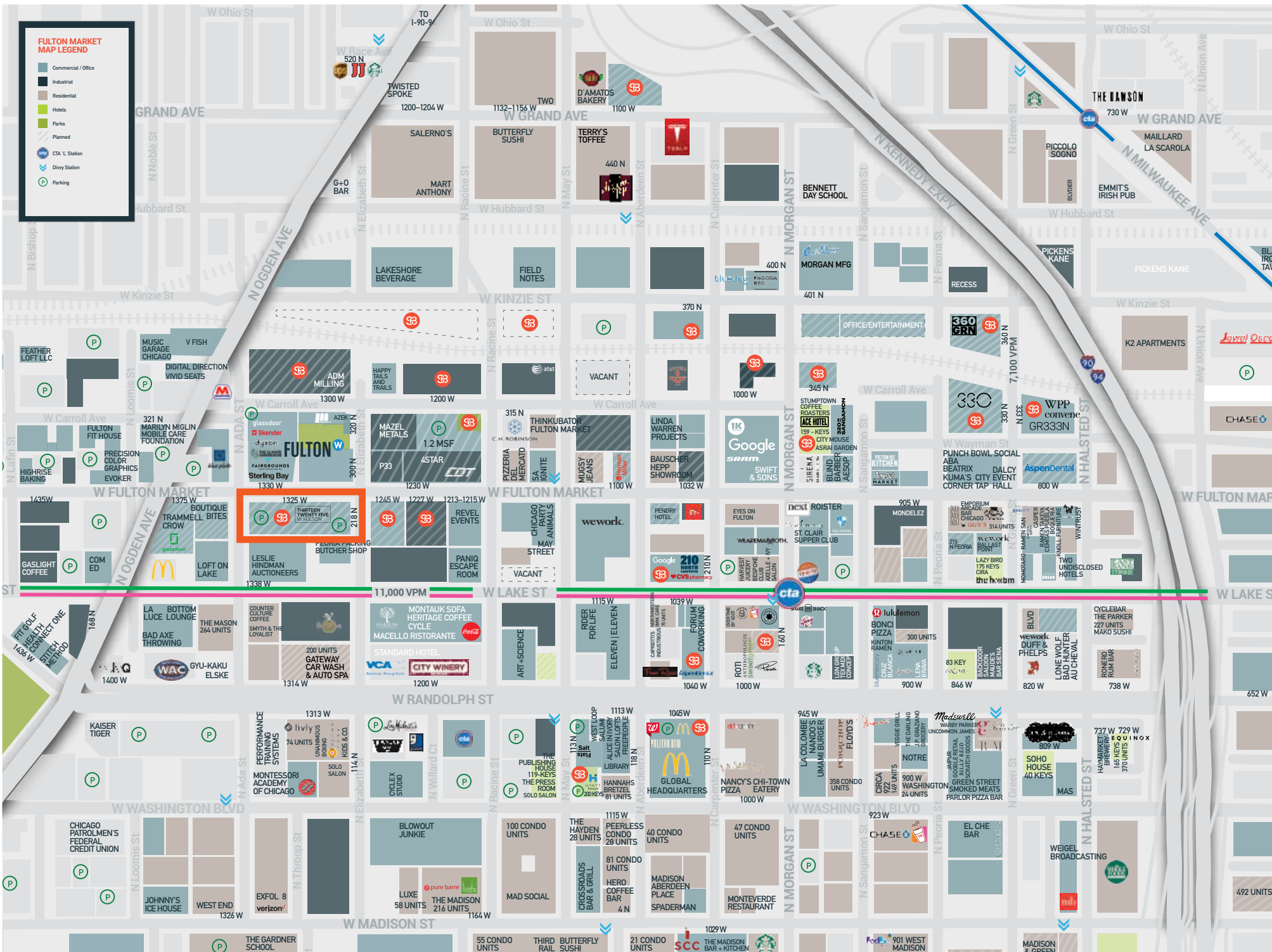
Floors 5-16

> 54,881 SF



FULTON MARKET MAP LEGEND

- Commercial / Office
- Industrial
- Residential
- Hotels
- Parks
- Planned
- CTA 'L' Station
- Divy Station
- Parking



Sterling Bay has attempted to verify the accuracy of the information contained herein, but makes no representations or warranties 4/13/2020

1325 W Fulton
Artist's conceptual rendering



Sterling Bay is a leading investment and development company with expertise spanning all aspects of real estate ownership. Known for creating world-class urban campuses for companies such as Google, McDonald's, Uber, Glassdoor, Dyson, Tyson Foods and Pinterest, Sterling Bay is consistently recognized for award-winning projects that transform space, enhance communities and strengthen a company's culture and brand. Sterling Bay's team of more than 200 professionals is responsible for a portfolio exceeding \$3 billion, and a development pipeline in excess of \$8.7 billion.

Find out more about at sterlingbay.com

1K Fulton



210 N Carpenter



McDonald's Global Headquarters



Say hello

office@sterlingbay.com
312.202.3478

